

# Princess Alexandra Hospital Profile

## 2026 RMO Campaign

### Location information

#### Address

199 Ipswich Rd

Woolloongabba Qld 4102

<https://metrosouth.health.qld.gov.au/princess-alexandra-hospital>

#### About us

The Princess Alexandra Hospital (PA) is a teaching hospital, providing comprehensive services to metropolitan Brisbane and southwestern Queensland.

The PA is a 1000-bed hospital located 4km from the CBD in Woolloongabba. It provides the full range of adult specialty services (excluding O&G) and serves a culturally and linguistically diverse patient population.

Innovation is part of our DNA and in November 2015, the PA became Australia's first large-scale digital hospital. As a major trauma centre, we have a retrieval service with a helipad located on the hospital roof, which incorporates a high-speed lift that travels directly into a resuscitation room.

The PA is nationally recognised for its expertise in digital health and telehealth. The Princess Alexandra Hospital is a major [medical research](#) precinct, hosting, Australia's most advanced medical research facility, the [Translational Research Institute \(TRI\)](#).



### Contact us

#### Employment Queries

##### **PHO-Reg Campaign Coordinator**

(Registrars and Principal House Officers)

☎ (07) 3176 6899

[PAH\\_RegistrarMedicalWorkforce@health.qld.gov.au](mailto:PAH_RegistrarMedicalWorkforce@health.qld.gov.au)

##### **JMO Campaign Coordinator**

(Interns, Junior and Senior House Officers)

☎ (07) 3176 2116

[PAH\\_JnrMedicalWorkforce@health.qld.gov.au](mailto:PAH_JnrMedicalWorkforce@health.qld.gov.au)

#### Allocations Queries

##### **Medical Allocations Officer**

(Interns, Junior and Senior House Officers)

☎ (07) 3176 7375

[pah.medicalallocations@health.qld.gov.au](mailto:pah.medicalallocations@health.qld.gov.au)

#### Education and Training Queries

##### **Medical Education Unit**

☎ (07) 3176 5453

[Medicaleducation\\_PAH@health.qld.gov.au](mailto:Medicaleducation_PAH@health.qld.gov.au)





## Services we provide

We provide acute medical, surgical, mental health, cancer, rehabilitation and allied health services. We are nationally recognised for our expertise in trauma management and we are a major transplantation centre for livers, kidneys, bone, cartilage, and corneas.

We also have responsibility for a number of state-wide services including:

- Queensland Adult Liver Transplant Service
- Queensland Kidney Transplant Service
- Queensland Tissue Bank
- DonateLife
- Queensland Spinal Cord Injury Service

The PAH Emergency Department supports patient admission via the state-wide aeromedical retrieval service which transports patients to hospital via helicopter or fixed wing aircraft. Additionally, a road accident response service and a major trauma retrieval service is managed by our Emergency Department and Intensive Care Unit

## Other services provided are:

- Acute Mental Health Care
- Alcohol and Drug Assessment
- Allergy and Immunology
- Audiology
- Bowel Cancer Screening
- Brain Injury Rehabilitation
- Breast and Endocrine Surgery
- Cancer Care
- Cardiothoracic Surgery
- Cardiology
- Colorectal Surgery
- Consultation Liaison Psychiatry
- Dermatology
- Diabetes (Specialist)
- Ear Nose Throat/Head and Neck
- Emergency Department
- Endocrinology
- Gastroenterology and Hepatology
- General Medicine
- General Surgery
- Geriatric Medicine
- Haematology
- Hypertension Medicine
- Infectious Diseases
- Maxillo-Facial Surgery
- Medical Oncology
- Neurology
- Neurosurgery
- Obesity Service
- Older Adult Mental Health Services
- Ophthalmology
- Orthopaedics
- Palliative Care
- Persistent Pain Management
- Plastic Surgery
- Radiation Oncology
- Renal Medicine
- Respiratory Medicine
- Rheumatology
- Sexual Health
- Sleep Disorder Centre
- Spinal Cord Injury Service
- Transplant
- Upper Gastrointestinal Surgery
- Urology
- Vascular Medicine

## Facility Benefits



Staff health and fitness centre



Childcare and parent facilities



Shopping complex across the road



Bus network and railway stations close by



Multiple cafes and newsagency on campus



Rental housing in surrounding suburbs



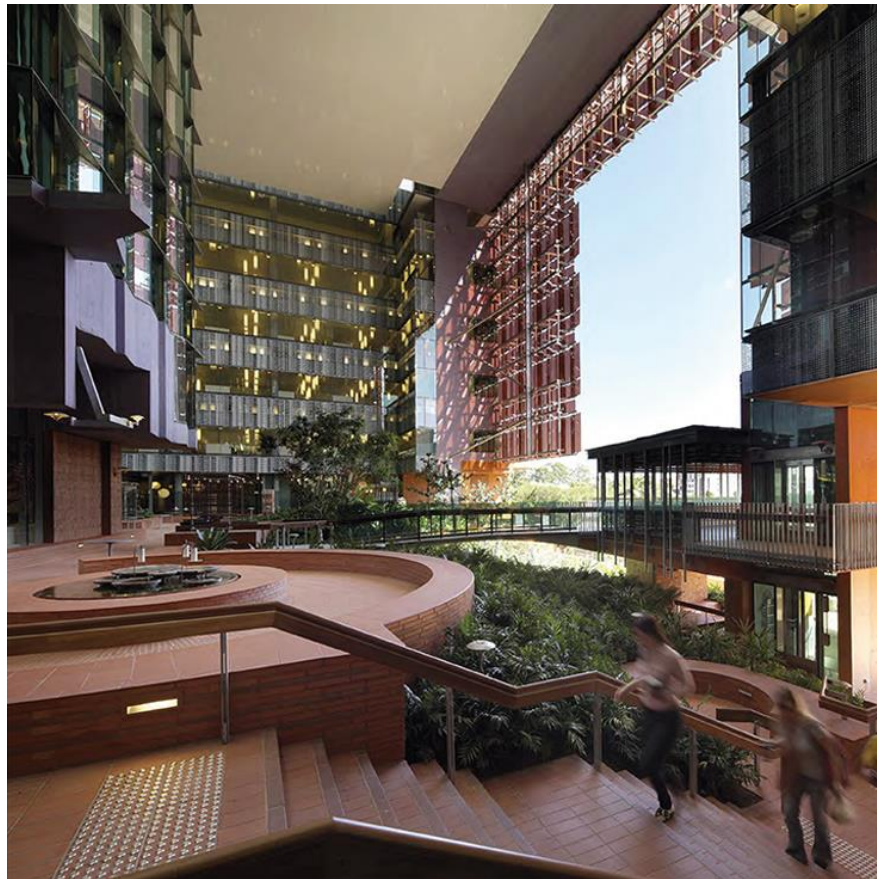
Locker provided for each resident



Job sharing arrangements available – enquire with our team.

## RMO education and training opportunities

- Extensive supervision and teaching available in all disciplines.
- Regular Resident Training sessions (twice weekly)
- Regular small-group simulation skills sessions
- Unit education meetings
- Digital Hospital training
- Access to Medical and Surgical Grand Rounds
- Opportunities for experience in a broad range of specialties
- Medical Education Unit provides career guidance and support, and oversees the Resident Education Program
- Peer led orientation and Mentor Program
- Junior Doctors Society
- Medical Common Room
- PAH Library located on campus, the library provides access to books, journals, and course materials
- Involvement in committees such as Prevocational Medical Education, Medication Safety, Analgesic Stewardship and Blood Management.
- Medical student teaching opportunities
- Research opportunities close to TRI (Translational Research Institute)
- PA Research Symposium opportunities



*Translational Research Institute (TRI) located on PAH Campus [source: [www.tri.edu.au](http://www.tri.edu.au)]*

# Facility-specific recruitment requirements

The selection process for Junior and Senior House Officers is attached separately within the RMO Campaign website.

## Available positions

### Registrars

We offer positions in:

- **After Hours Medical Education Registrar** – The purpose of the AHCU Medical Education Registrar is to support development and delivery of a high-quality education program and provide support and supervision to junior medical staff (interns, residents and medical registrars) rotating through a term in AHCU, while also being actively involved in the operations of the unit and participating in quality improvement and research activities within the unit.
- **Cancer Services** - Clinical Haematology, Medical Oncology, Radiation Oncology.
- **Medical Administration**
- Psychiatry (Appointed by Metro South Addiction and Mental Health),
- **Medicine** - Basic Physician Training Program, Chief Medical Registrar, Clinical Immunology, Clinical Pharmacology, Dermatology, Endocrinology, Gastroenterology and Hepatology, General Medicine, Geriatric Medicine, Hypertension, Infectious Diseases, Nephrology, Neurology, Rheumatology and Metro South Palliative Care Medicine
- **Heart, Lung and Critical Care** – Cardiology, Cardiothoracic Surgery, Vascular Medicine, Respiratory, Sleep and Mycobacterial Medicine Department, Emergency Medicine including CAREPACT, Intensive Care Unit, Radiology and Medical Imaging.
- **Surgery** - Anaesthetics, Ear Nose and Throat, General Surgery (including Breast and Endocrine, Acute Surgical Unit, Colorectal, Transplant, Upper GI, Hepatobiliary), Neurosurgery, Oral and Maxillofacial, Ophthalmology, Orthopaedic Surgery, Plastic and Reconstructive Surgery, Urology, Vascular Surgery, Otolaryngology Head & Neck
- **Rehabilitation** – Brain Injury Rehabilitation Services, Queensland Spinal Cord Injury Services, Metro South Pain Rehabilitation Centre

### Principal House officers

Acute Surgical, Australian Centre for Complex Integrated Surgical Solutions (ACCISS), Basic Physician Training Network, Dermatology, Cardiothoracic Surgery, Plastic and Reconstructive Surgery, Ear, Nose and Throat, General Surgery, Neurosurgery, Ophthalmology, Oral and Maxillofacial, Orthopaedics, Psychiatry, Urology, Vascular, Gastroenterology and General Medicine.

### Junior and Senior House officers

We offer rotational house officer positions as well as a limited number of dedicated SHO positions in Dermatology, Emergency Medicine and Ophthalmology. Numbers are subject to change, but will be displayed on the [RMO and Registrar position search tool | Queensland Health](#). Applicants should always discuss employment opportunities with preferred hospitals before submitting their application.

Our junior rotational positions offer off-campus rotations at:

- Queen Elizabeth II Jubilee Hospital
- Queensland Children's Hospital (Paediatrics)



- St Vincent's Private Hospital Brisbane (Palliative Care)
- Various rural placements as part of the Queensland Country Practice Program

There are approximately 150 rotational house officer positions at PAH which are managed by Medical Employment Services. Our house officers are required to complete a 5-week After Hours Care Unit (AHCU) rotation and/or a possible 5-week rural rotation. Annual leave is allocated in a 5-week consecutive block relative to a half-term. All house officers are invited to complete a term and leave preference survey, which is used to allocate rotations and leave for the year in accordance with service requirements and the national prevocational framework. We always do our best to align our house officers to their preferences, however this cannot always be guaranteed.

**The following specialties may be offered as part of medical allocations at PAH:**

- |   |  |
|---|--|
| • Anaesthetics and Day Surgery & Treatment Unit | • Neurosurgery   |
| • Acute Surgical Unit                           | • Oncology   |
| • Brain Injury Unit                             | • Ophthalmology  |
| • Breast and Endocrine                          | • Orthopaedics   |
| • Cardiology                                    | • Paediatrics (external rotation only at Queensland Children's Hospital)             |
| • Clinical Pharmacology                         | • Palliative Care (external rotation only at St Vincent's Private Hospital Brisbane) |
| • Cardiothoracic Surgery                        | • Plastic Surgery  |
| • Colorectal                                    | • Psychiatry   |
| • Dermatology                                   | • Renal Medicine   |
| • Emergency Medicine (PAH & QEII)               | • Respiratory Medicine   |
| • Endocrinology                                 | • Rheumatology   |
| • ENT Surgery                                   | • Rural Placement  |
| • Gastroenterology                              | • Spinal Injury Unit   |
| • General Medicine                              | • Transplant Surgery   |
| • Haematology                                   | • Upper GI   |
| • Immunology                                    | • Urology  |
| • Rheumatology                                  | • Vascular Surgery   |
| • Infectious Diseases                           |  |
| • Intensive Care (SHOs only)                    |  |
| • Medical Assessment Planning Unit (MAPU)       |  |
| • Neurology                                     |  |

## Community and lifestyle

Princess Alexandra Hospital (PAH) has an enviable reputation for excellence in clinical care, as well as being one of Australia's leading academic and research health centres.

A leader in innovative healthcare, PAH continues to raise the bar by promoting research and supporting medical developments. Working at PAH provides a diverse range of clinical experiences and exceptional opportunities to develop your skills within a tertiary setting.

