

# QEII Jubilee Hospital facilities and services

RMO Campaign 2026

## Location information

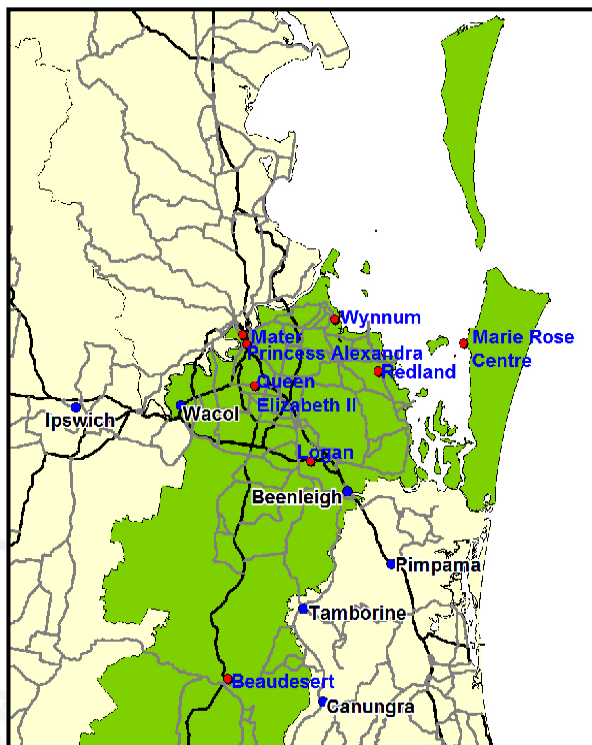
### Contact us:

**Email:** [QEII\\_medicalworkforce@health.qld.gov.au](mailto:QEII_medicalworkforce@health.qld.gov.au)

**Website:** <https://metrosouth.health.qld.gov.au/qeii-jubilee-hospital>

### Address:

Cnr Kessels & Troughton Roads  
Coopers Plains Q 4108  
Locked Bag 2, Archerfield Q 4108  
Phone: (07) 3845 7708 (JHO/SHO)  
(07) 3182 6397 (PHO/REG)



# Hospital facilities

QEII is a medium-sized hospital with around 220 beds with an additional 44 beds offsite and more than 1700 staff including Visiting Medical Officers (VMOs). We have a supportive and friendly working environment with 24-hour Registrar (REG) or Principal House Officer (PHO) cover in most specialties.

QEII provides a range of inpatient and outpatient services and has a state-of-the-art Emergency Department and Endoscopy Unit which opened late 2014 that attends to just under 60,000 patients per annum. As part of the 2014 expansion project a transit lounge and additional clinical training rooms were also built.

Currently QEII is undergoing an expansion project to add another 112-bed specialised surgical facility by 2027 to assist with future growth and become the premier surgical hospital for Metro South Health.

## Clinical service profile

**QEII Jubilee Hospital provides a range of inpatient and support services including: -** 24hour emergency medicine, general medicine, surgical services (emergency and elective, including Day Surgery Unit and anaesthetics), cardiology, geriatric, and rehabilitation services (GARS), gynaecology, orthopaedics, intensive and coronary care, neurology, gastroenterology, urology and urodynamics, and respiratory medicine.

**Current outpatient, day only and support services include: -** Rehabilitation services, endocrinology, public dental clinic, Breast Screen Queensland, ophthalmology, endocrinology, an elective endoscopy service, and allied health services including dietetics, occupational therapy, physiotherapy, social work and speech pathology.

These services are supported by onsite medical imaging, pathology, and pharmacy services.

- Breast and Endocrine Surgery
- Cardiology
- Colorectal Surgery
- Colposcopy
- Consultation Liaison Psychiatry
- Diabetes (Specialist)
- Dietetics
- Emergency Department
- Endocrinology
- Gastroenterology
- General Medicine
- General Surgery
- Geriatric Medicine
- Gynaecology
- High Risk Foot Service
- Infection Management
- Infectious Diseases
- Neurology
- Older Adult Mental Health Services
- Orthopaedics
- Palliative Care
- Respiratory
- Rheumatology
- Upper Gastrointestinal Surgery
- Urology

## RMO education and training opportunities

All specialties are accredited for specialist training.

### Education & Training

- Weekly junior doctor education program
- Practical skills workshops and ALS training available
- Regular Grand Rounds supplement specific departmental educational meetings

# Employment conditions

- Salary packaging
- 17.5% annual leave loading
- Cumulative sick leave
- Generous superannuation
- Professional development
- Paid study leave
- Allowances for specific roles
- Training and skills development opportunities
- Flexible working conditions
- Modern facilities
- Employee Assistance Program

## Senior Medical Staff

Executive Director – Gillian Campbell

Director Medical Services – Dr Christopher Bell

Director Clinical Training – Dr Amber Winter

A/Director Nursing – Kathy Flanigan

Director Allied Health – Leo Ross

## Available positions

These numbers are subject to change, and applicants should always discuss employment opportunities with your preferred hospitals before submitting your application.

### Fellows

Urology, Gynaecology, General Surgery

### Registrars

Anaesthetics, Intensive Care Medicine, Gynaecology, General Medicine, Emergency Medicine, General Surgery, Gastroenterology/Endoscopy, Orthopaedics, Urology, Palliative Care and Geriatrics

### Principal House officers

Anaesthetics, Emergency Medicine, Urology, General Surgery, Orthopaedics, Intensive Care, General Medicine.

### Junior and Senior House officers

There are approximately 50 positions for junior and senior house officers at QEII Hospital. Rotations are tailored to the individual based upon responses to a preference survey. The following rotations are available for JHO/SHOs:

- |                                 |                             |                                   |
|---------------------------------|-----------------------------|-----------------------------------|
| • Emergency Medicine            | • General Medicine          | • Cardiology                      |
| • Urology                       | • Rehabilitation/Geriatrics | • Anaesthetics                    |
| • General Surgery               | • Orthopaedics              | • Intensive Care Unit             |
| • Gynaecology                   | • Psychiatry (off site)     | • Paediatric Emergency (off site) |
| • Paediatric Surgery (off site) |                             |                                   |

# Community and lifestyle

Coopers Plains is a family friendly suburb only 13 km from Brisbane's central business district. With its excellent retail and shopping facilities and along with numerous public transport options, it's easy to see why many employees of the Queen Elizabeth II Jubilee Hospital choose to live in the area. The Hospital is the second largest employer in the suburb.

Explore Coopers Plains and its surrounds through the local park and bikeways. The 260-hectare Toohey Forest Park on the grounds of Griffith University offers active sightseers an opportunity to explore the native flora and fauna on a number of bushwalking tracks suiting varying levels of fitness. The park is perfect for picnics, bird watching and includes lookouts with stunning views of the city and its surrounds.

