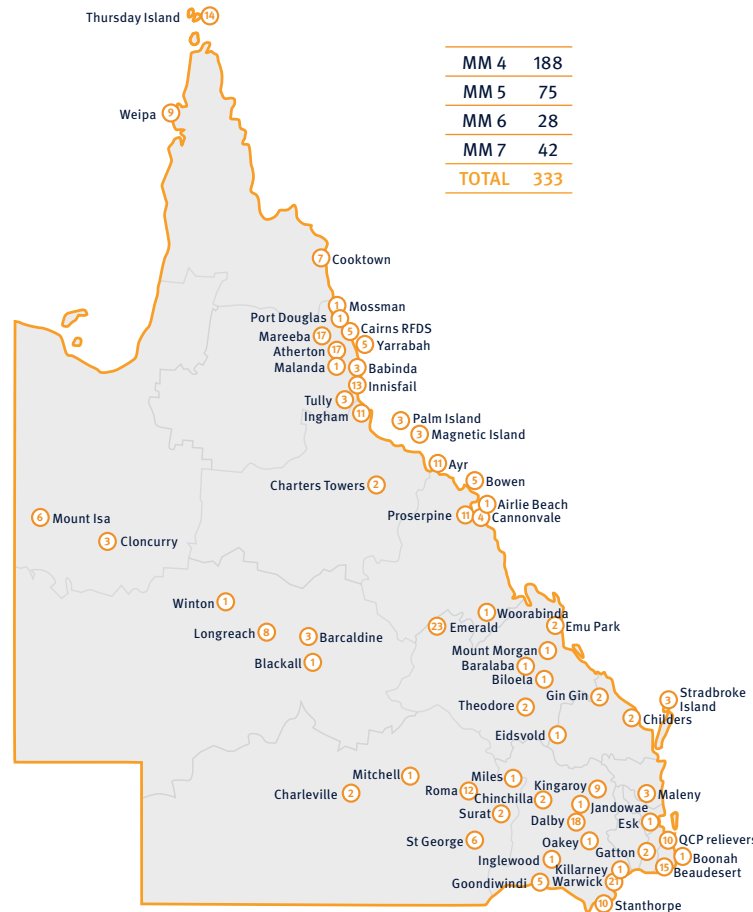


February 2025

PGY4+ doctors in MM* 4+ locations

*Modified Monash Model



*Many also provide GP services in this setting

400

active trainees

81% intern entry

19% postgraduate entry



294

fellows* have completed training

*Rural Generalist endpoint of FACRRM and/or FRACGP-RG



3%

First Nations people



63%

of trainees who started are still training or have followed



69%

of eligible* trainees and fellows are in MM 4+ locations

*Not prevocational or AST

153

fellows have held fellowship for 5 years or more

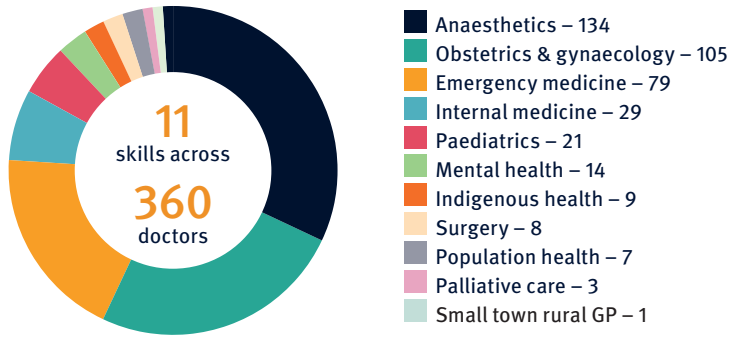


87% have practised in MM 4+ locations for 5 years or more

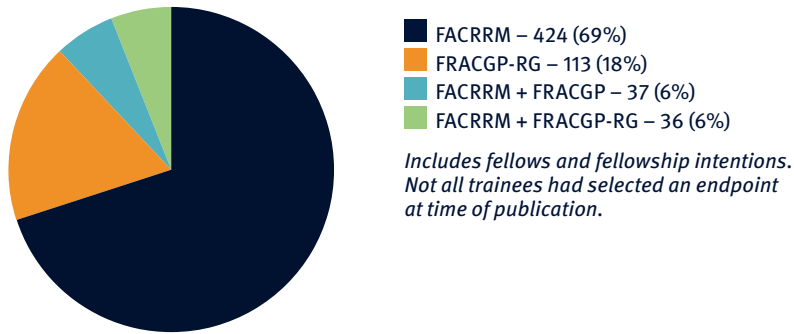
Trainees and fellows by university



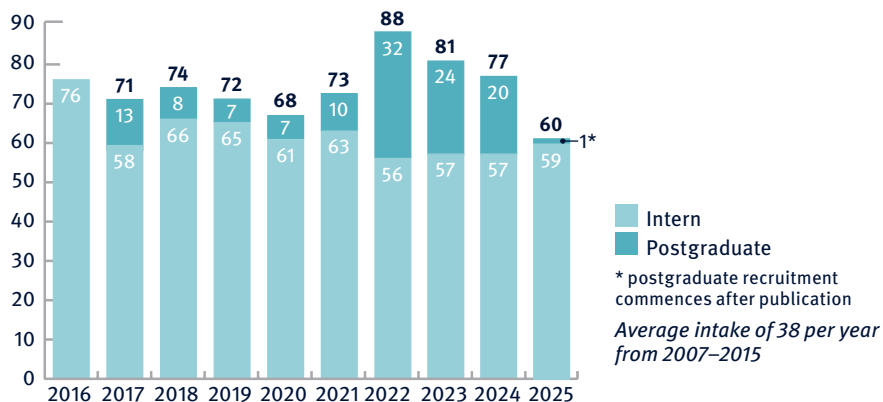
410 advanced skills completed with 73% in use



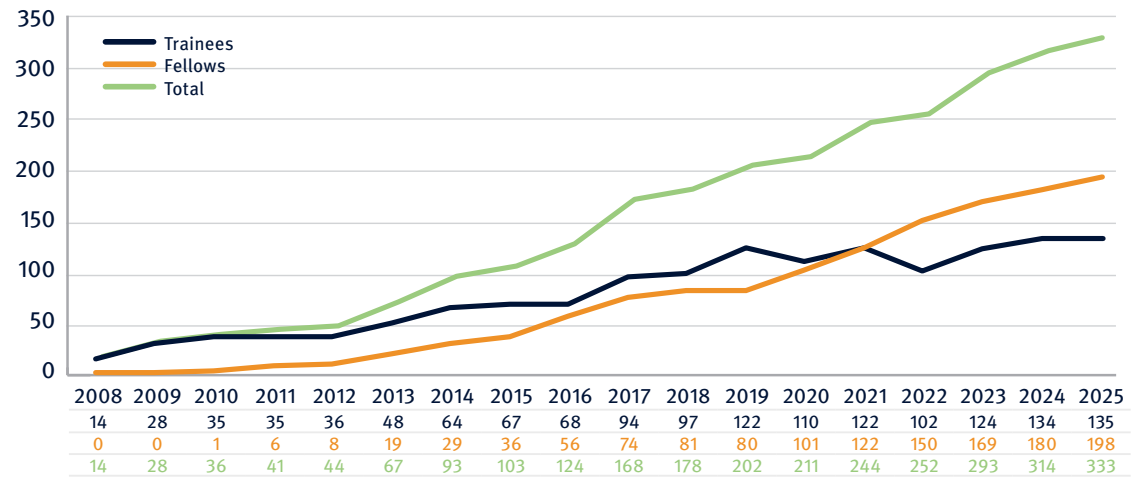
610 trainees/fellows by college endpoint



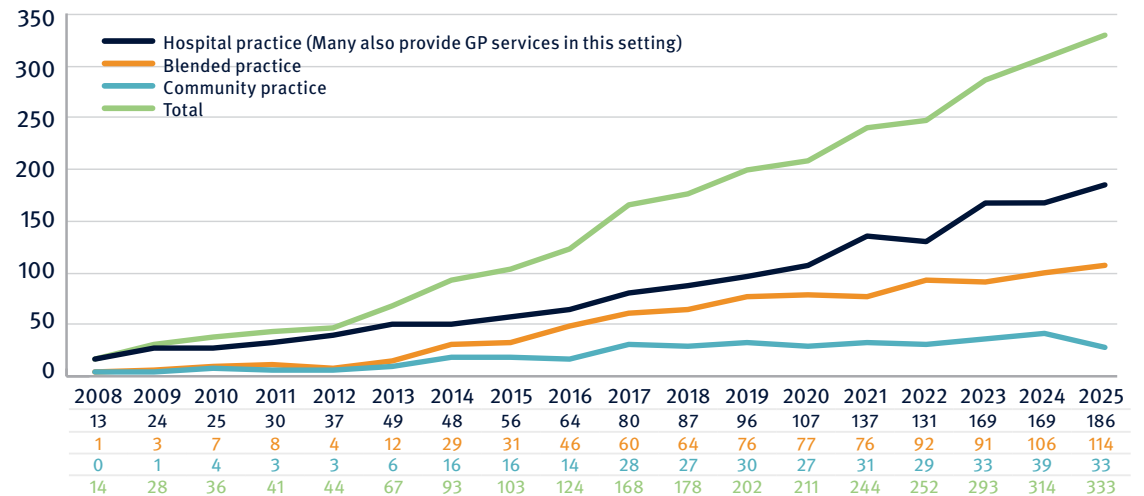
Pathway intake by year



PGY4+ trainees and fellows in MM 4+



PGY4+ trainees and fellows in MM 4+ by practice type



Find out more

