

Role Description

UROLOGY PRINCIPAL HOUSE OFFICER

Job ad reference:

Location*:	RBWH	Unit/Department:	Department of Urology Surgical and Perioperative Services Royal Brisbane and Women's Hospital (RBWH)
Status:	Full-time for 12 Months from February 2026	Classification:	Level 4- Level 7
Salary Range:	\$ (plus superannuation and leave loading benefits)	Closing Date:	
Contact name:	Dr Adam Pearce	Contact number:	0404 707307, adam.pearce@health.qld.gov.au

Online applications:

* Please note: there may be a requirement to work at other facilities located across Metro North Health.

**Future recurring vacancies may also be filled through this recruitment process at any location across Metro North Health.

***Applications from third parties will not be accepted.

Purpose of the role

- In conjunction with the Urology registrars, and under the supervision of Urology consultants, to provide care for outpatients, elective and emergency surgical patients at the RBWH and outpatients and elective surgical patients at STARS.

Context and Delegations

- This is an excellent opportunity for those wishing to pursue a career in Urology, with exposure to tertiary level, subspecialised care.
- The role is most suited to candidates with prior Urology PHO experience.
- There are ample opportunities to undertake high-quality research at RBWH.
- This role reports directly to the Consultant Urologists and Director of Urology.
- This role has a professional reporting line to Chief Medical Officer/ Director Medical Services RBWH
- This role will work directly with registrars, and Consultant Urologists, junior medical staff and specialist nursing staff.
- Formal online, simulator and dry training in the Da Vinci Xi robotic system will be provided by Device representatives.

Key Accountabilities

The successful applicants will carry out the following key accountabilities in accordance with the Metro North values and competencies shown above in this role description:

- Fulfil the responsibilities of this role in accordance with Queensland Health's core values, as outlined above.
- Interview and examine patients to identify clinical problems and select appropriate investigations.
- Assemble clinical information and the results of investigation available from sources.

- Diagnose clinical conditions.
- Plan overall clinical care through a comprehensive management plan.
- Provide on-call out-of-hours cover reporting directly to the appropriate consultant on **1:6** basis.
- Assist with Urological operations including robotic bedside assisting.
- After an appropriate period of supervision, to perform basic urological procedures independently.
- Present cases for Multi-Disciplinary Team (MDT) discussion and action agreed plans appropriately.
- To cover timetable gaps resulting from registrar leave as necessary.
- Initiate and maintain continuous critical care.
- Undertake clinical responsibilities by providing patient care, liaise with other doctors and hospitals for referrals, and maintaining appropriate records and confidentiality, including obtaining and documenting consent.
- Help patients share the responsibility of their management and care.
- Work with and supervise junior staff within the scope of their role.
- Provide ethical decision making in the achievement of organisational goals.
- Utilise clinical practice guidelines and evidence-based care principles
- Participate as a member of the multi-disciplinary team.
- Follow the hospital guidelines and policy.
- Arrange adequate follow-up after discharge from hospital.
- Communicate regularly and effectively with Unit Registrars and Consultants.
- Practice excellence in communication with patients and relatives.
- Perform medical administrative tasks as required.
- Comply with and utilise procedures, policies, regulations and standards which impact upon the position, including contemporary human resource management requirements and practices, such as workplace health and safety, equal employment opportunity and anti-discrimination policies.

About Metro North Health

Delivering outstanding health services is just one of the ways that we care for our community. Our passion for people is reflected in the way we do our work and live our values every day. We value and nurture our team members so they can provide quality value based care to our patients across our diverse organisation. Our focus on Value Based Healthcare means we expect our staff to deliver the care the patient needs, no more and no less, to achieve the best quality of life for our community. This passion fuels our collaborative culture of innovation and research.

We embrace the diversity of local and greater communities as we provide services to people throughout Queensland, northern New South Wales and the Northern Territory, in all major health specialities including medicine, surgery, mental health, cancer care, trauma, women's and newborn care, and more than 30 sub-specialities. Metro North Health services include rural, regional and tertiary hospitals, and community and oral health services.

Our diverse Health Service provides a wide variety of rewarding career paths across our tertiary/quaternary referral hospitals, secondary hospitals, community health centres, residential and extended care facilities and regional community hospitals. We expect our staff and volunteers to translate our values into action through providing high quality connected care that is relevant, efficient and respectful of our patients' needs and wishes. Our people are passionate about our community and patients, with a focus on putting people first. Come and work where people are at the centre of everything we do and your contribution is truly valued.

Health Equity and Racism



Metro North Health has set out its actions and agreed key performance measures to improve Aboriginal and Torres Strait Islander people's health and wellbeing outcomes.

Racism is a key structural determinant of Aboriginal and Torres Strait Islander people's health inequity. Racism is not always conscious, explicit, or readily visible - often it is systemic. Systemic or institutional racism are forms of racism that are widely and deeply embedded in systems, laws, written or unwritten policies and well-established practices and beliefs that produce, condone, and perpetuate widespread unfair treatment, causing and/or contributing to inherited disadvantage.

It is expected that all Metro North Health staff, including the incumbent of this role as a valuable member of the Metro North workforce, contribute to the health equity agenda and meet the intent of supporting the defined six actions that specifically meet the needs of Aboriginal and Torres Strait Islander people within the National Safety and Quality Health Service Standards (NSQHS), by actively supporting the elimination of racial discrimination and institutional racism; supporting increased access to health care; influencing the social, cultural and economic determinants of health; supporting the delivery of sustainable, culturally safe and responsive health services; and recognise the importance of working with Aboriginal and Torres Strait Islander peoples, communities and organisations to design, deliver, monitor and review the health and support services we provide.

Please visit our website for additional information about Metro North Health. <http://metronorth.health.qld.gov.au/>

Our Vision

Excellent healthcare, working together, strong and healthy communities.

Metro North Health Values and their corresponding Lominger™ competencies:



Respect

- Interpersonal savvy
- Manages conflict
- Communicates effectively



Teamwork

- Collaborates
- Develops talent
- Values differences



Compassion

- Customer / patient focus
- Demonstrates self-awareness
- Manages ambiguity



High performance

- Cultivates innovation
- Action oriented
- Drives results



Integrity

- Decision quality
- Ensures accountability
- Courage

- Balances stakeholders
- Builds effective teams
- Being resilient
- Drives vision and purpose
- Manages complexity

Find out how Metro North Health uses the [Lominger™ Leadership Framework](#) to underpin our recruitment, on-boarding, performance support and staff development systems.

How you will be assessed

You will be assessed on your ability to demonstrate the following values within the context of the “Key Accountabilities”. The ideal applicant will be able to demonstrate the following:

- **Respect** – demonstrates interpersonal savvy, manages conflict appropriately, communicates effectively and balances the needs of all stakeholders with utmost respect to all people at all times.
- **Teamwork** – collaborates effectively, develops talent, values difference and builds effective teams to bring about best use of resources to deliver healthcare services.
- **Compassion** – is patient / client focussed, demonstrates self-awareness and the effects of behaviour on others, deals with or manages ambiguity and complexity, demonstrates resilience in the delivery of patient services or support in the delivery of services to patients.
- **High Performance** – cultivates innovation, is action oriented, drives results and supports Metro North Health's vision and purpose to exceed expectations of our patients and stakeholders.
- **Integrity** – demonstrates sound decision quality, ensures accountability, demonstrates courage in the face of adversity and works effectively / manages complexity to ensure work output and decisions are ethical and invariably of a high standard.
- **Interest in Urology**. Previous PHO experience in Urology will be well regarded.

Mandatory qualifications/professional registration/other requirements

- Appointment to this position requires proof of qualification and registration with the Medical Board of Australia.
- **Disclosure of Serious Disciplinary History:** Under the [Public Sector Act 2022](#), applicants are required to disclose any previous serious disciplinary action taken against them.
- It is a condition of employment for this role for the employee to be, and remain, vaccinated against the following vaccine preventable diseases during their employment ([Health Employment Directive No. 01/16](#)):
 - Measles, mumps, rubella (MMR)
 - Varicella (chicken pox)
 - Pertussis (whooping cough)
 - Hepatitis B
 - Tuberculosis

How to apply

Please provide the following information to the panel to assess your suitability:

Your current CV or Resume, including referees. You must seek approval prior to nominating a person as a referee. Referees should have thorough knowledge of your work performance and conduct, and it is preferable to include your current/immediate past supervisor. By providing the names and contact details of your referee/s you consent for these people to be contacted by the selection panel. If you do not wish for a referee to be contacted, please indicate this on your CV or Resume.

- Submit your application online at [RMO Campaign](#) by the closing date.
- Please note that hand delivered, or late applications will not be accepted.
- Only those persons eligible to work in Australia may be employed by Metro North Health. Prospective employees are required to provide proof of identity and documentary evidence of their right to work in Australia.

Diversity and Inclusion

We are committed to providing a diverse and inclusive workplace for our people and our community. We encourage people of all genders, races, ages and abilities to apply for roles within Metro North Health and strive to ensure that our workplace is free from all forms of discrimination and harassment.

As an Equal Employment Opportunity (EEO) employer we ensure that our selection processes and employment decisions are undertaken in a non-discriminatory way and are consistent with the requirements of the Anti-Discrimination Act 1991. If there are any reasons that you may have challenges with the recruitment process, please let us know when we contact you.

Work Health and Safety

We are committed to *Putting People First* to provide better healthcare. This commitment includes a dedicated *People Focussed Safety* culture.

This culture commits to the health, safety and wellbeing of staff, volunteers and other persons, through the provision of a dynamic and comprehensive Health and Safety Management System (HSMS). The HSMS provides for proactive safety initiatives, early injury management practices with a strong focus on a safe and durable return to work.

The provision of a Health and Safety environment within Metro North Health is everyone's responsibility.

Safety and Quality

Relevant to the position, staff participate in the ongoing education, implementation, monitoring and evaluation of safety and quality initiatives relevant to The National Safety and Quality Health Services Standards 2nd Edition and the Australian Council on Healthcare Standards (ACHS).

Vaccine Preventable Diseases (VPD) Requirements ([Health Employment Directive No. 01/16](#))

It is a condition of employment for this role for the employee to be, and remain, vaccinated against the following vaccine preventable diseases during their employment:

- Measles
- Mumps
- Rubella
- Varicella (chicken pox)
- Pertussis (whooping cough)
- Hepatitis B

Further vaccinations may be required due to particular risks for a role; examples include:

- Hepatitis A – Workers in regular contact with untreated sewerage
- Q Fever – Research or Laboratory staff regularly handling specimens

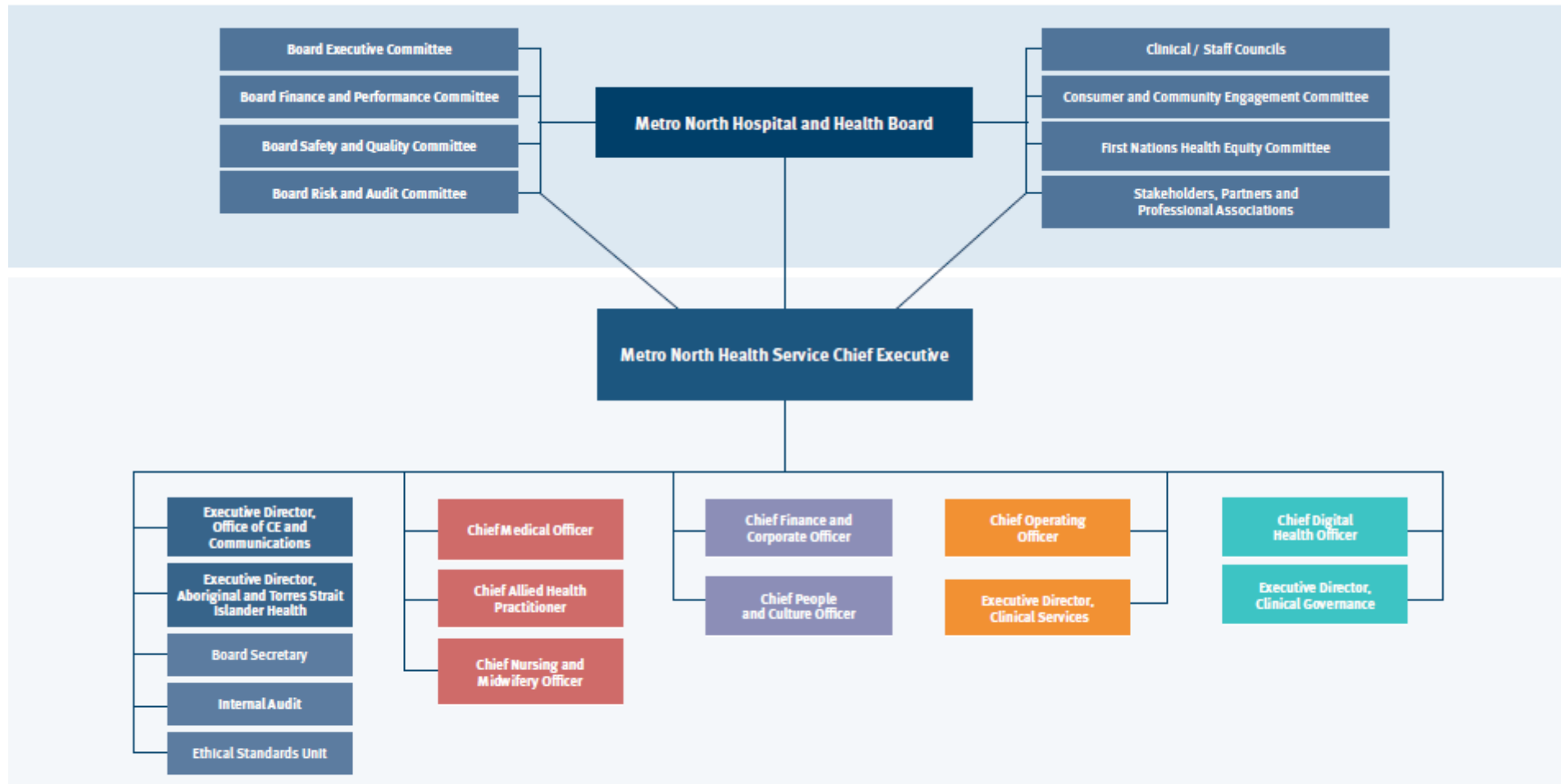
All new employees who will be working in clinical areas must be assessed for their risk of tuberculosis and screening undertaken if required.

Existing staff that are engaged prior to 1 July 2016 are **not subject** to this condition of employment unless they apply for a role with VPD requirements that is with a different Queensland Health entity (i.e. one Health Service to another Health Service, Department of Health (DoH) to a Health Service, or Health Service to DoH).

Additional Information

- Applications will remain current for 12 months or for the duration of the vacancy.
- Future vacancies of a temporary, full time and part time nature may also be filled through this recruitment process.
- Health Care Workers in Queensland Health whose occupation poses a potential risk of exposure to blood or body fluids must be immunised against Hepatitis B according to the National Health and Medical Research Council Australian Immunisation Handbook and the Queensland Health Infection Control Guidelines.
- Pre-employment screening, including criminal history and discipline history checks, will be undertaken on persons recommended for employment. Roles providing health, counselling and support services mainly to children will require a Blue Card, unless otherwise exempt. Roles providing services to National Disability Insurance Scheme (NDIS) participants require an NDIS worker screening check.
- Applicants may be required to disclose any pre-existing illness or injury which may impact on their ability to perform the role.
- Applicants will be required to give a statement of their employment as a lobbyist within one (1) month of taking up the appointment. Details are available at:
https://www.forgov.qld.gov.au/_data/assets/pdf_file/0033/185919/lobbyist-disclosure-policy_0.pdf
- Employees who are appointed to Queensland Health may be required to undertake a period of probation appropriate to the appointment. For further information, refer to Probation HR Policy B2
<https://www.health.qld.gov.au/system-governance/policies-standards/doh-policy/policy/qh-pol-197.pdf>
- All relevant health professionals, who in the course of their duties formulate a reasonable suspicion that a child or youth has been abused or neglected in their home/community environment, have a legislative and a duty of care obligation to immediately report such concerns to Child Safety Services, Department of Communities.

Metro North Health Executive Structure



EFFECTIVE DATE: 02/2025

Metro North
Health



Queensland
Government